



**105 Cartington Terrace, Newcastle Upon Tyne, NE6 5SJ**

**Offers Over £190,000**

Hive Estates presents to the market this immaculate, recently renovated two bedroom upper Tyneside flat, ideally situated on Cartington Terrace. This bright and spacious property offers stylish, turnkey living and benefits from a private rear yard.

Upon entry, you are welcomed by a well-presented hallway with tiled flooring and useful storage space. The landing provides access to all principal rooms and additional storage.

The standout open-plan kitchen and living area has been thoughtfully redesigned to create a generous, sociable space. The living area features a striking feature wall and chimney breast with built in storage, while the contemporary kitchen is fitted with cream shaker style units, wood effect laminate worktops, a ceramic sink, and integrated appliances including a fridge freezer, oven, and hob. Laminate flooring runs seamlessly throughout.

The master bedroom is a substantial and beautifully finished room, enhanced by a large bay window that floods the space with natural light. It also offers a deep alcove, ideal for fitted wardrobes. The second bedroom is also well-proportioned and versatile, perfect as a guest room, home office, or dressing room. To the rear, there is a practical utility area with space for a washer/dryer and further storage, finished with neutral decor and grey tiled flooring. The bathroom is accessed from this space and features stylish grey floor tiles, striking emerald green wall tiles, a shower over bath, vanity basin unit, and WC.

Externally, the private rear yard provides an excellent space for entertaining, offering both privacy and low-maintenance outdoor living. The property is superbly located just a short distance from Iris Brickfield, as well as a range of local shops, cafes, and restaurants. This is an ideal purchase for first time buyers or investors seeking a high quality, move in ready home.

**Kitchen/Lounge 14'11" x 20'5" (4.55 x 6.24)**

**Bedroom 1 14'8" x 12'7" (4.48 x 3.84)**

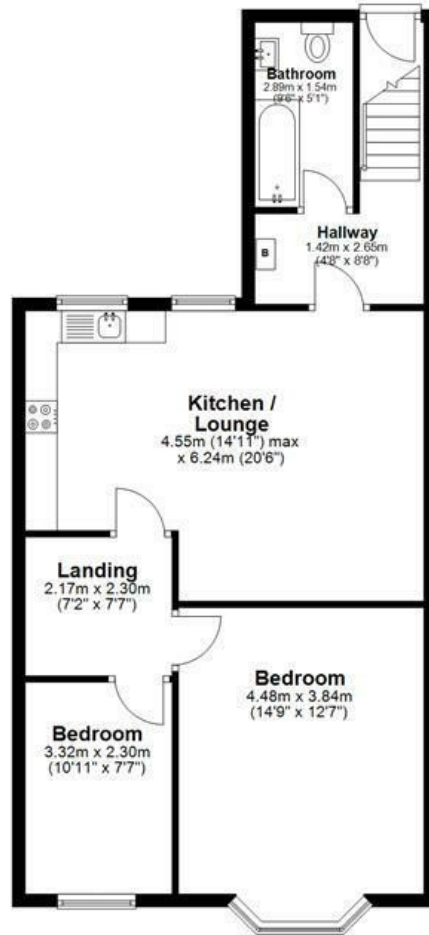
**Bedroom 2 10'10" x 7'6" (3.32 x 2.30)**

**Bathroom 9'9" x 5'0" (2.99 x 1.54)**

# Floor Plan

## Ground Floor

Approx. 69.2 sq. metres (744.8 sq. feet)

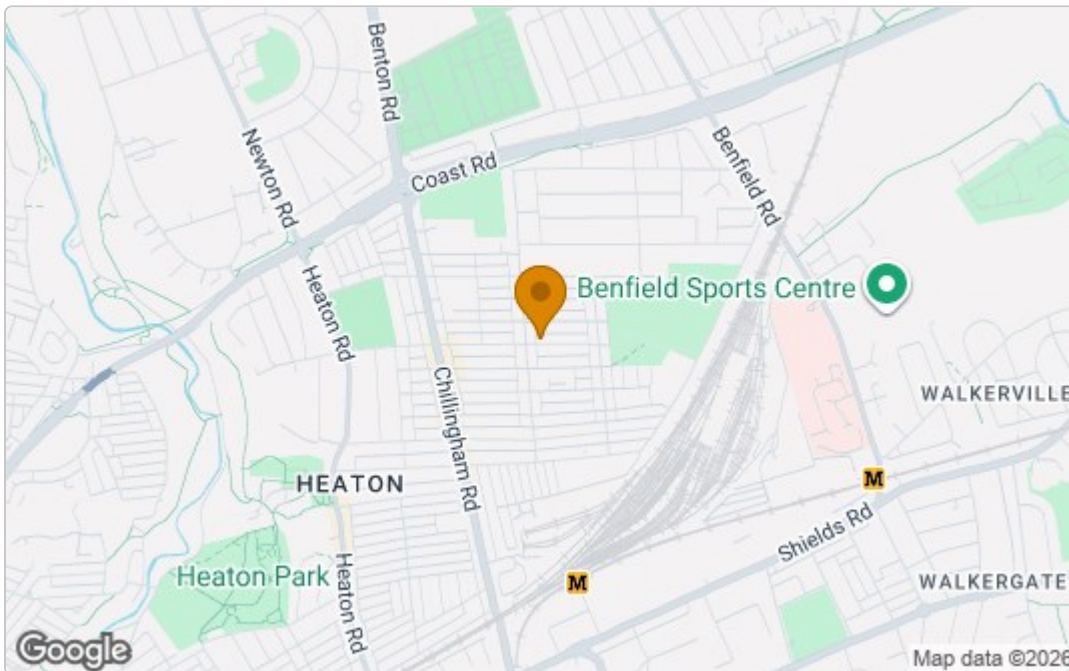


Total area: approx. 69.2 sq. metres (744.8 sq. feet)

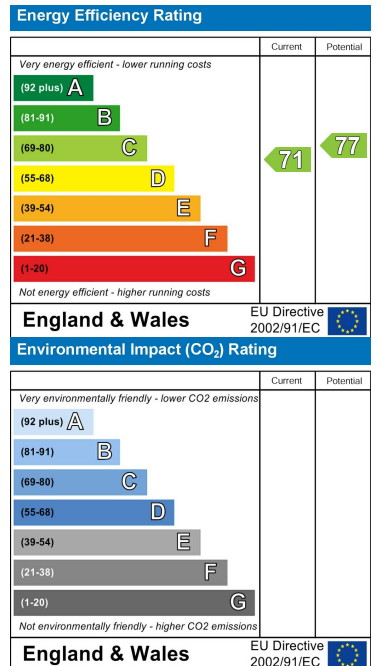
This floorplan is for illustrative purposes only and is not drawn to scale. Measurements of benches, stairways, openings etc are approximate. They should not be relied upon for any purpose and do not form part of any agreement. No liability is taken for any error or mis-statement.  
Plan produced using PlanUp.

## Area Map

105 Cartington Rd, Newcastle Upon Tyne



## Energy Efficiency Graph



These particulars, whilst believed to be accurate are set out as a general outline only for guidance and do not constitute any part of an offer or contract. Intending purchasers should not rely on them as statements of representation of fact, but must satisfy themselves by inspection or otherwise as to their accuracy. No person in this firm's employment has the authority to make or give any representation or warranty in respect of the property.